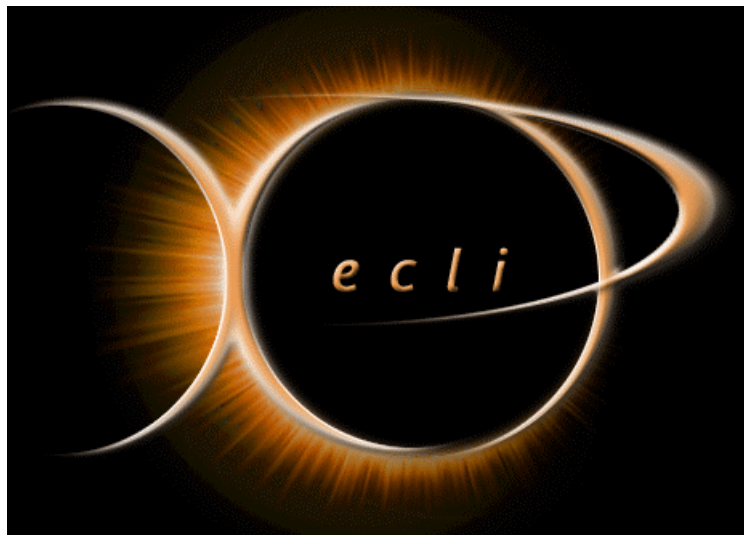


X e c l i P



user`s guide

XecliP – table of contents:

XecliP User Guide

Getting started

- 1.1 Connecting to XecliP-Server

Concepts

- 2.1 UserView
- 2.2 UserProfileDialog
- 2.3 SessionDefinitionDialog
- 2.4 SessionWizard
- 2.5 SessionView
- 2.6 JavaEditor
- 2.7 PlayBackView
- 2.8 Sessionlog Dialog
- 2.9 XecliPPreferences

Tasks


- 3.1 Create a Session
- 3.2 Working in Pairprogrammingsession
 - 3.2.1 Act as Driver
 - 3.2.2 Act as Navigator
 - 3.2.3 Act as Visitor
 - 3.2.4 SwitchRole
- 3.3 Close a Session
- 3.4 Communicating with XP-Partners
- 3.5 Create a user profile
- 3.6 Organize XP-Partnerlist
- 3.7 Playback a Session
- 3.8 Running XecliP-Server

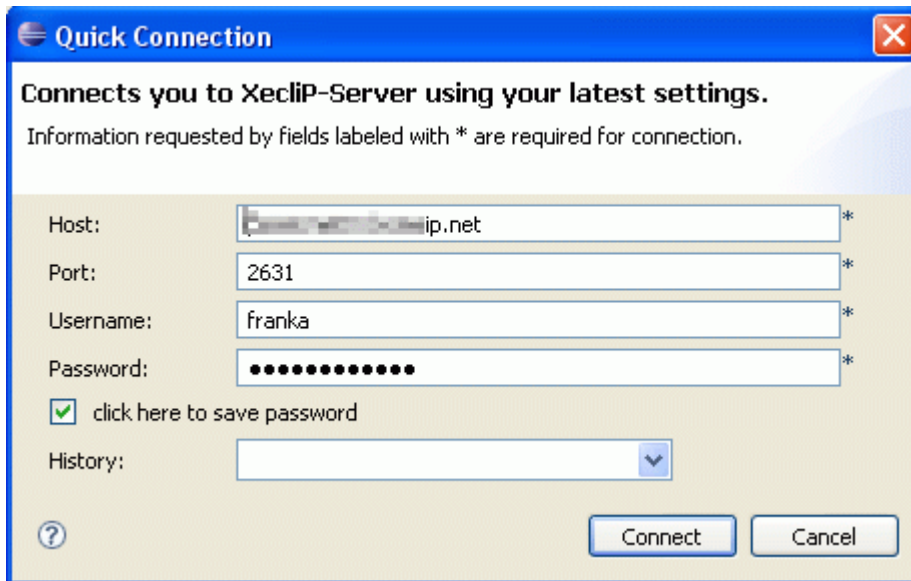
<p><i>Published by</i></p>	<p><i>XecliP Team</i></p> <p>Fachpraktikum CSCW term 2006/2007</p> <p>at Fernuniversität in Hagen (Germany) faculty of Informatik Juniorprofessur für Verteilte Systeme für kooperative Arbeits-/Lernumgebungen</p>
<p><i>Authors</i></p> <p><i>and</i></p> <p><i>developers of the XecliP plug-in</i></p>	<p>Angela Leberfinger,</p> <p>Karin Paland,</p> <p>Franka Schnarrenberger,</p> <p>Rainer Gloede,</p> <p>Tobias Harmes,</p> <p>Dirk Jablonski,</p> <p>Dominik Kröger</p>

Getting started

1.1 Connecting to XecliP-Server

1.1 Connecting to XecliP-Server

You have to connect to a Xeclip-Server before joining a pair programming session. Please choose **XecliP > QuickConnect** from the menu or select the button  from toolbar. Then you will see the following connection dialog.



Quick Connection

Connects you to XecliP-Server using your latest settings.

Information requested by fields labeled with * are required for connection.

Host: *

Port: *

Username: *

Password: *

click here to save password

History: ▼

The following Settings are required:

- Host: server name,
- Port: server port,
- Username: your user name
- Password: and your password.

The password can be saved. It will be saved on your local harddisc in a encrypted way. (Saved passwords are stored on your computer in a file that is difficult, but not impossible, for an intruder to read.)

You can load the setting from history using the dropdown menu, if you have been to this server before. The history keeps track of the last 5 settings you used.

A connection to XecliP-server will be established after pressing the "Connect"-button.

Concepts

2.1 UserView

2.2 UserProfileDialog

2.3 SessionDefinitionDialog

2.4 SessionWizard

2.5 SessionView

2.6 JavaEditor

2.7 PlayBackView

2.8 Sessionlog Dialog

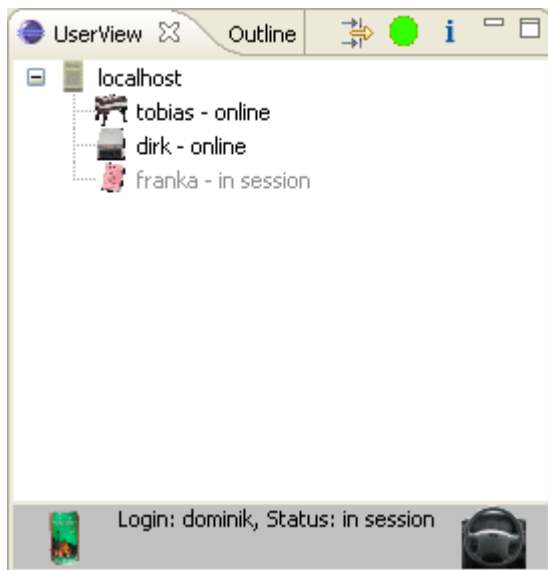
2.9 XecliPPreferences

2.1 UserView

The User View starts automatically by using the XecliP Perspective if you connect to a server. It can be opened manually by **Window > Show View > Other > XecliP**.

As soon as you are connected to a server, the UserView shows in a tree structure the server with his IP-address, if created your user groups and all online users with their own icons, names and their status (online / in session / not available /busy). In the status line of the view you will see yourself with your login name, your icon, your status and in case you are just in a session the icon correspondig to your role.

UserView:



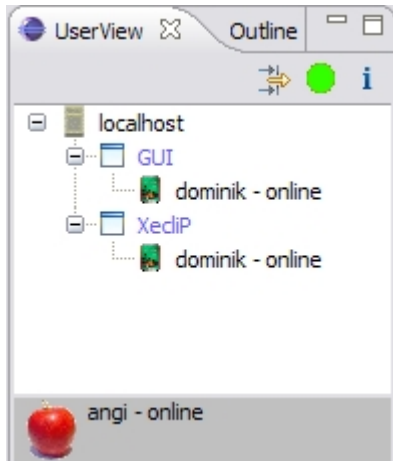
Status of users:

- **online:** The user is online and can be invited to a pair programming session.
- **busy:** The user has logged in, but his status is "busy" at the moment. This happens for example when the data transfer begins before a session start.
- **not available:** The user has logged in, but changed his status to "not available" at the moment. He can't be invited to a pair programming session. To switch your own status see "Change your own status".
- **in session:** This user has joined a pair programming session ([Session view](#)) and can't be invited to another session.

If a user disconnects from the server (his status would be "offline") it will disappear from the tree.

Groups:

Users can be individually grouped in the User View. Groups are displayed in a blue color. All group members are shown under the appropriate group. In case one user is a member of more than one group, he will be shown several times (one time in each group). Groups can be added or edited at the XecliP preference page by a right click on the server or a group (“Organize Groups”) or **Window > Preferences > XecliP**. For more informations please see [XecliP Preferences](#).



The user view is also be used to choose a user to invite him to a pair programming session. To start a session see the instructions below.

Short explanation of the functions in this UserView:

1. Invite another user to a session



To invite another user (his status must be “online”) you can start the session definition dialog with a right click oder a double click on this user in the tree. There are some conditions to start a pair programming session.

2. Answer to an invitation

If you are invited to a pair programming session by another user this will be shown by a yellow background color at this user. You can start the invitation dialog by a right click or a double click on the inviting user.

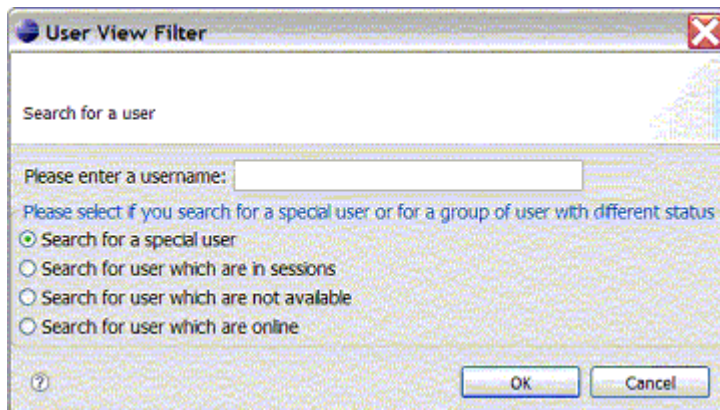
3. Change your own status /

If you are busy at the moment but don't want to log out from the server, you can change your own status from “online” to “not available” by using the status button in the user view's menu bar. The button's color will change from green to red.


As long as your status is “not available”  you won't be able to be invited to a session. If you want to swich your status back to “online”  please press the status button again. His color will change to green and your status change to “online”. Please note: This funtion is disabled if you already joined a session.

4. Search for users by the user filter

By using the filter button in the user view's menu users can be sorted by status or name. If you want do find a special user choose the option “Search for a special user”, enter his name in the text field and press “OK”. If you search for users with a special status choose one of the three other options and press “OK”. A user name is not required in this case. The user view will show you all users according to your search options. To restore the user view's state please press the filter button again and.



5. User profile input dialog

By using the  button in the user view's menu users can start the user profile input dialog. Within this dialog the user can give some details about his person (name, address etc.), personal abilities and name of projects, in which he has worked. The user can also load a picture from himself ([Create a user profile](#)).

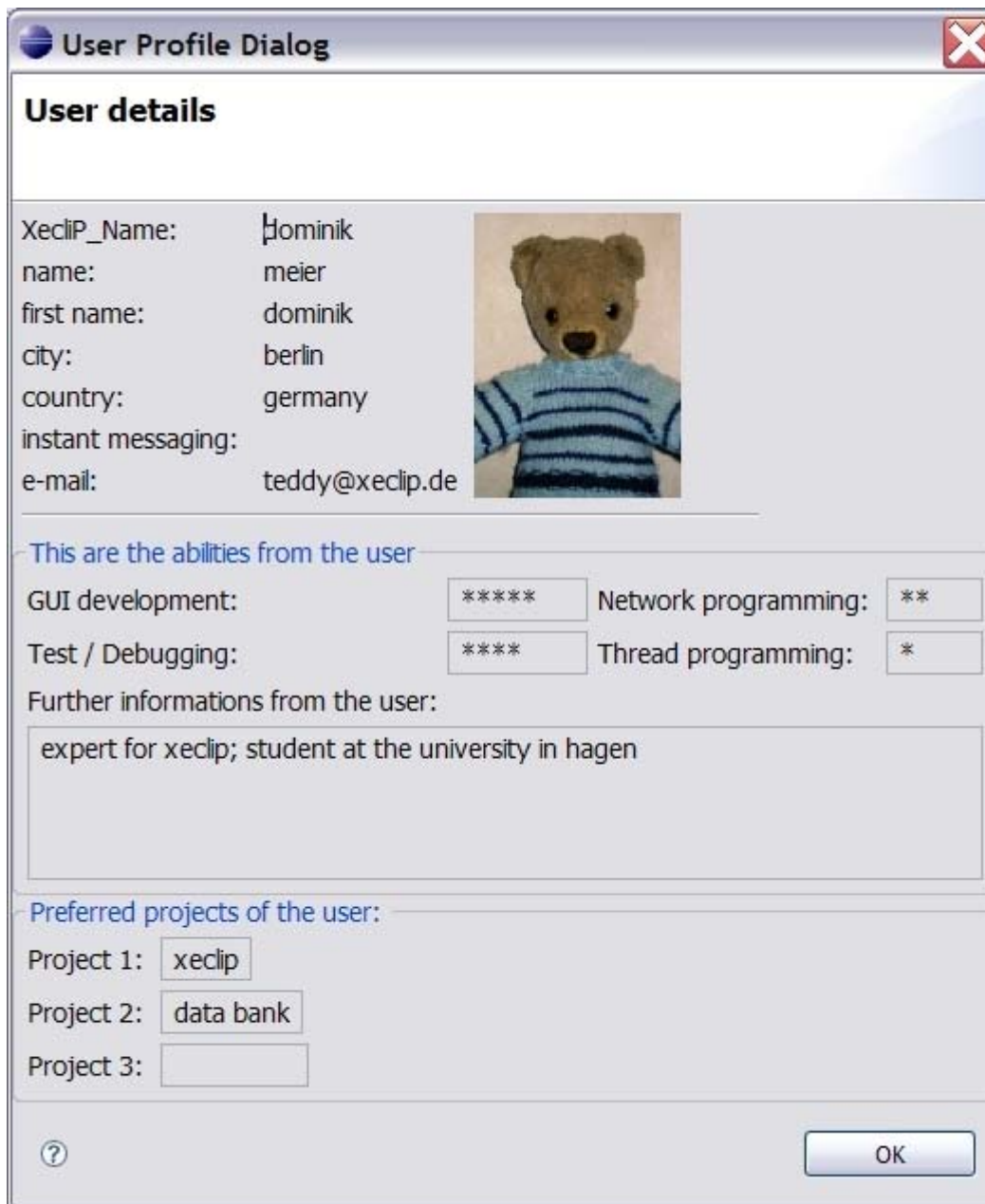
The abilities are necessary and helpful to get some more informations about the user and later this statements help to find a partner for a common project. For example you can search with the session wizard in the the session view for a special user.

6. Accept a visitor to participate in a session

If a visitor wants to participate in your session, this will be shown by a flashing green background color at this user in the User View. The driver can accept or deny his request by a right click on the user.

2.2 UserProfile Dialog

By right-click on a user in the context menu in the user view the user can look for an user profile of another user. The user is able to see the details from the user containing name, address etc. and if the user has loaded a picture, the user can also see a picture of the user:

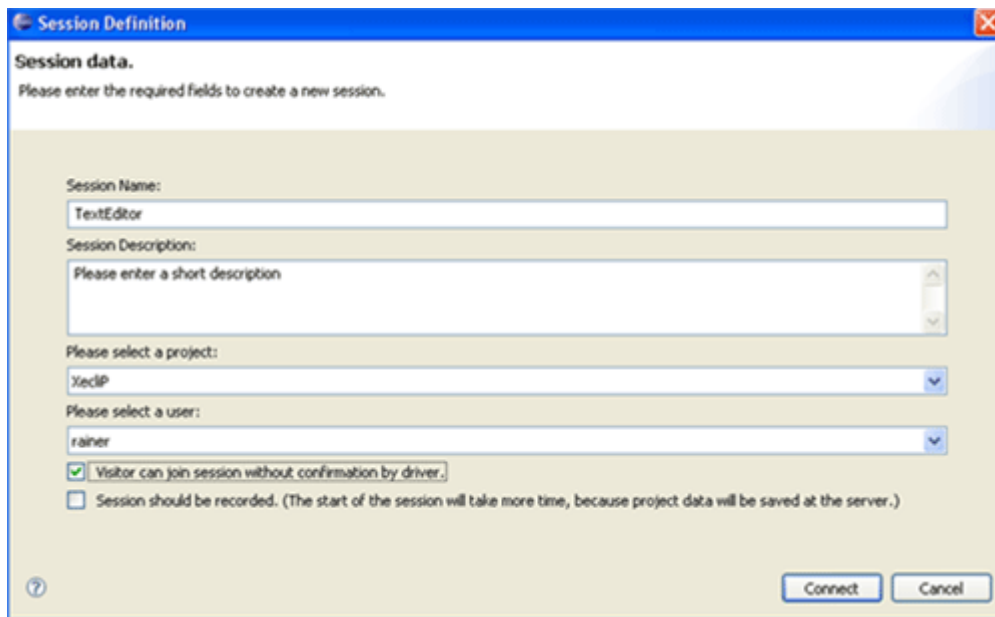


By using the UserProfile InputDialog the user can fill in his own profile ([Create a user profile](#)).

2.3 SessionDefinition Dialog

After you have connected to the server ([Connect to Xeclip-Server](#)) you can choose a user for the pairing session. There are three possibilities to open the SessionDefinitionDialog:

1. Choose a user in the UserView ([UserView](#)) and right-click. Choose "Invite as navigator to session". The SessionDefinition dialog will appear.
2. Choose from the menu: **Xeclip** > **New session**. The SessionDefinition dialog will appear.
3. Choose a user at the Session Wizard Result Dialog ([Session Wizard](#)). After the dialog gets open you can choose a xp-partner from the combo box. After pressing the OK button the SessionDefinitionDialog will appear.



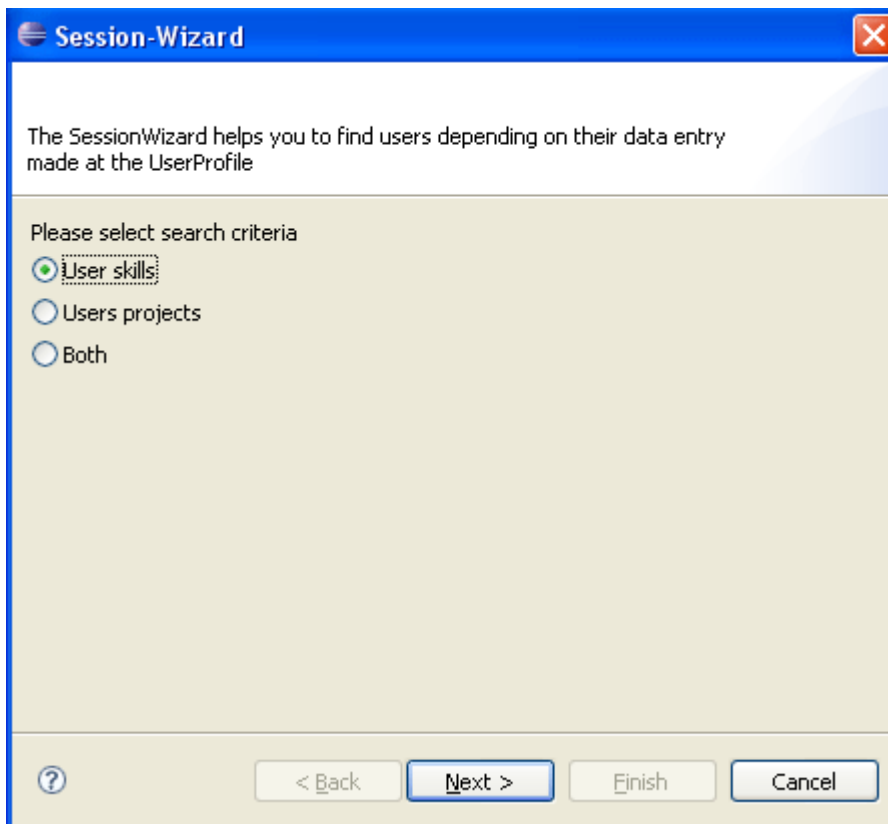
- In the **Session Name** field, type a name as the name of your new pair programming session
- In the **Session Description** field, type a brief description for the task of the new session
- Select the project from the combo box **Please select project** which you want to use for your session.
- Depending on which method you have chosen (1., 2. or 3.) to open the dialog, you have to select a user from the **Please select User** combo box. In the first and third case the user will appear in the combo box field, otherwise you have to select it by yourself.
- Check the first check box, if you want to allow visitors to join the session without confirmation by the driver.
- Check the second check box, if you want to record the session.

Attention: Do not use this function if you have a internet connection with low upstream speed on driver side or the navigator has a internet connection with low downstream speed. The whole project data of the session will be transferred to the server and from server to navigator. So it can take much more time to setup the session.

Click **Connect** button to send invitation to the selected user.

2.4 SessionWizard

You can start the SessionWizard bei pressing the **SessionWizard** button at the SessionView toolbar ([SessionView](#)). With the session wizard a user can search for an user with special skills or who is working at a particular project.



At the first page the user can choose if he want to search for users with special skills or for users who are working at a particular projects. With the third searching criteria the user can look for both (skills and projectnames).

After the user has selected a radiobutton and pressed the **Next** button, the next wizard page appears. On this page the user have to select/enter further details.

Wizard page "Search for user skills":

Session-Wizard

User skills

Please select at least one skill

GUI development:

Network programming:

Test / Debugging:

Thread programming:

The skills depend on the data entry each user made at the UserProfile.

? < Back Next > Finish Cancel

Wizard side "Search for user projects":

Session-Wizard

User projects

Please enter a valid projectname

Projectname:

The projectname depends on the data entry each user made at the UserProfile.
If you do not know the correct name of the project, you can search for a substring
(e.g. 'xe' or 'cli' will find the projectname 'xeclip'.)

? < Back Next > Finish Cancel

Wizard page "Search for both (user skills and projectname)":

Session-Wizard

User skills and projects

Please enter a valid projectname and at least one skill

GUI development:

network programming:

Test / Debugging:

Thread programming:

Projectname:

The projectname and skills depend on the data entry each user made at the UserProfile. If you do not know the correct name of the project, you can search for a substring (e.g. 'xe' or 'cli' will find the projectname 'xeclip'.)

? < Back Next > Finish Cancel

After pressing the "Finish" button the request will be send to the server. After a few seconds the result page will appear. All users matching the searching criteria will be shown and the user has the possibility to start a new session with one of the found users. Otherwise the user can press "Retry" and search again or press **Cancel** to close the dialog.

SessionWizard Results

This dialog shows all users matching the search criteria you made before at the SessionWizard. You can start a new session or if no user is available search again by pressing the RETRY button.

Username: rainer	user-status: not available		
Gui skills: ***	Network skills: ***	Test skills: ***	Thread skills: ***
project_1: xeclip	project_2:	project_3:	

Username: tobias	user-status: online		
Gui skills: ***	Network skills: ***	Test skills: **	Thread skills: ****
project_1: xeclip	project_2:	project_3:	

Please select an user from the combobox to start a new session and then press OK otherwise press CANCEL

tobias

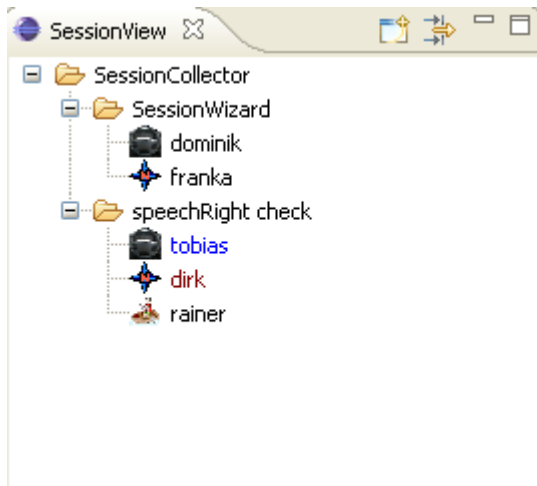
? OK Cancel Retry

2.5 SessionView



You can start the SessionView by using the menu **Window > ShowView > Other > XecliP > SessionView**. Otherwise the view gets open after initializing a session.

The SessionView shows in a tree structure all actually sessions and all users, who are in this sessions. By means of the icon in front of the username you can see which role the individual user has in the session. The user can be in a role as a navigator, a driver or a visitor.

SessionView:

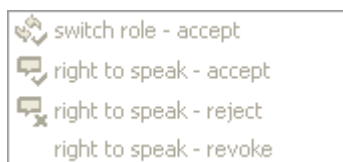


In the menu are two icons:

-  session wizard
-  sessionFilter

With right-click on the session folder (e.g. "SessionWizard") a session popup menu gets open. It contains "join session as visitor", "leave session" and "close session". Only driver and navigator are able to close their session. A dialog will get open and asks if he/she really wants to close the session.

With right-click on an user (e.g. "Dominik"), a user popup menu gets open:



Short explanation of the functions in this SessionView:

1. With **switch role - accept** ([SwitchRole](#)) the users can accept a change of the roles (driver/navigator).
2. With **right to speak - accept** the driver can accept a speech request from visitor
3. With **right to speak - reject** the driver can reject a speech request from visitor.
4. With **right to speak - revoke** the driver can revoke an already given speech right.
5. The **SessionWizard** will start a dialog. The user will be guided through the dialog to search for users and start a session ([Session Wizard](#)).
6. The **SessionViewFilter**: This filter has the function to search for an user or a session by name. You just have to type the name of the session or the user (case sensitive!) and select "search for session" or "search for user" and press OK. The SessionView will show you the found session / session with the user you have searched for.

Session View Filter

Search for a session or a user

Please enter session- or username:

Please select if you search for user- or sessionname

Search for a session

Search for a user

2.6 XecliP Java Editor

For the XecliP-plug-in the XecliP Java editor is the default editor to edit Java documents. If you are not in a XP-session you will not notice any difference to the ordinary Java editor of Eclipse. The editor provides all specialized features the Eclipse user knows from the Java editor, amongst others:

- syntax highlighting
- content/code assist
- code formatting
- import assistance
- quick fix
- integrated debugging features

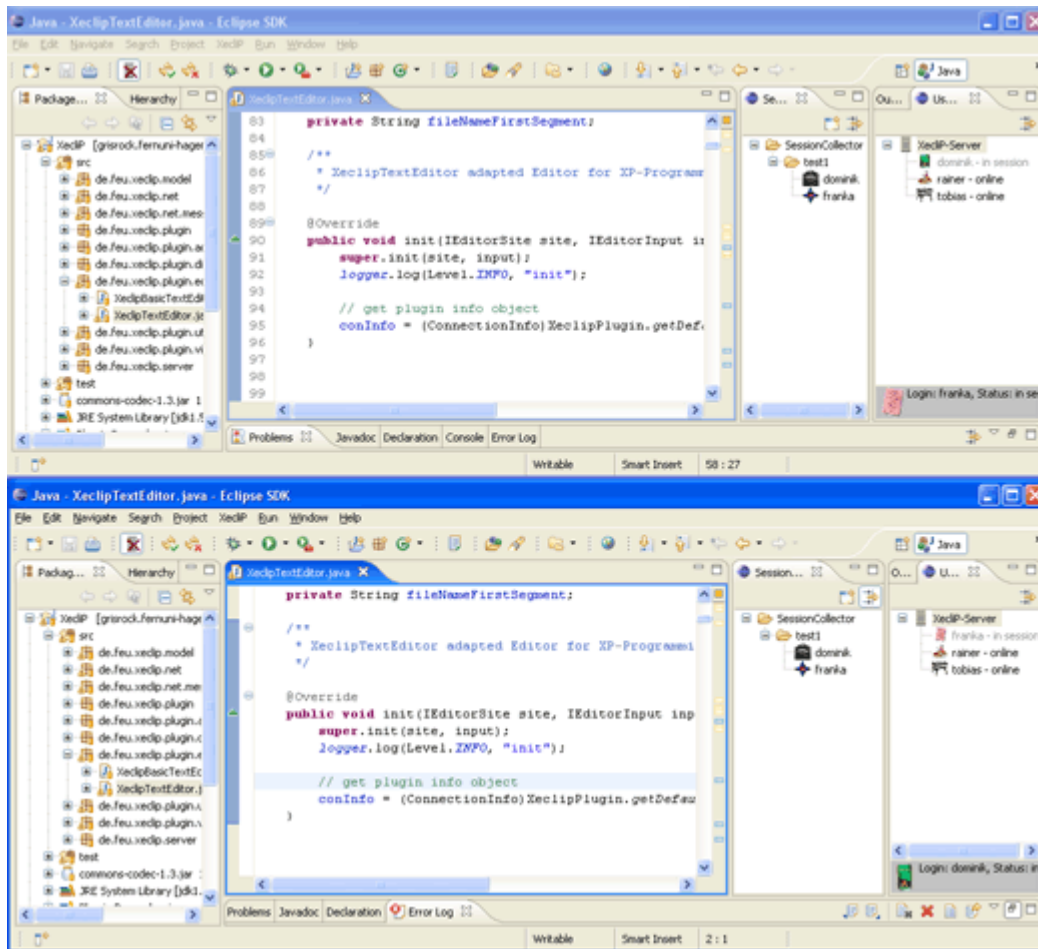
After initializing a pair programming session ([SessionDefinitionDialog](#)), it is important to use the XecliP Java editor. If the driver opens a new Java file, **which is part of the shared project of the session**, the same file is opened in the XecliP Java editor at the other XP-partners; on navigator or visitor side. The most common way to invoke the XecliP Java editor is to open a Java file from the *Navigator* or *Package Explorer* using pop-up menus or by selecting a Java file. While the opening of the editor is in process at the XP-partners side, the driver sees a progress monitor, which will disappear when the editor is open at all XP-partners.

While the pair programming session is running, all changes made on the driver side will appear on the XP-partner side. If the role of the XP-partner (driver - navigator) changes ([SwitchRole](#)) the new driver get the control to edit the files.

At the moment the following events are supported by the XecliP Java editor:

- The driver opens a new Java file, so the editor will be opened at XP-partner side as well.
- The driver saves editor content; the file will be saved at XP-partner side, to keep the source code consistent.
(A navigator or visitor can not save a editor file while the session is running.)
- The editor window is closed by any XP-partner, the file will be closed at all other XP-partners too.
- The driver changes to another editor window, the new window will get to top at all XP-partners.
- The driver changes the cursor position or changes the text of the file; the changes will appear at XP-partner side.
(During the pair programming session the navigator or visitor is not able to edit the document or to change the cursor position.)
- The driver or navigator fold or unfold an editor region, the folding or unfolding event is shown at all XP-partners. The event only effects those XP-partners, which have enabled folding event in the Eclipse preferences.
- The driver selects a text; the text selection is shown to all other XP-partners in blue colour.
- The navigator selects a text; the text selection is shown in green colour to the other XP-partners.
- A visitor has the speech right, and then a text selection is shown in brown colour at all other XP-partners.
- If a driver or a navigator scrolls up or down in the editor window, the scrolling event is performed on the other XP-partner side as well.

Screen example:



On this screenshot you can see on the top the view of the navigator and at the bottom the view of the driver

Keep in mind:

If the driver choose a different editor for opening a Java file, while a session is running, the file will not be opened on the XP-partner side. At the moment the plug-in Java editor only supports Java files. So if you open a file of a different format, you can not share it within a pair programming session.

Source consistence:

To keep the Java sources consistence, it is not recommended to make a checkout or check in to CVS or other version management system during a session. After the session is closed either the driver or the navigator should check in the changed java documents. The other XP-partners should only update the project data if needed.

2.7 PlayBackView

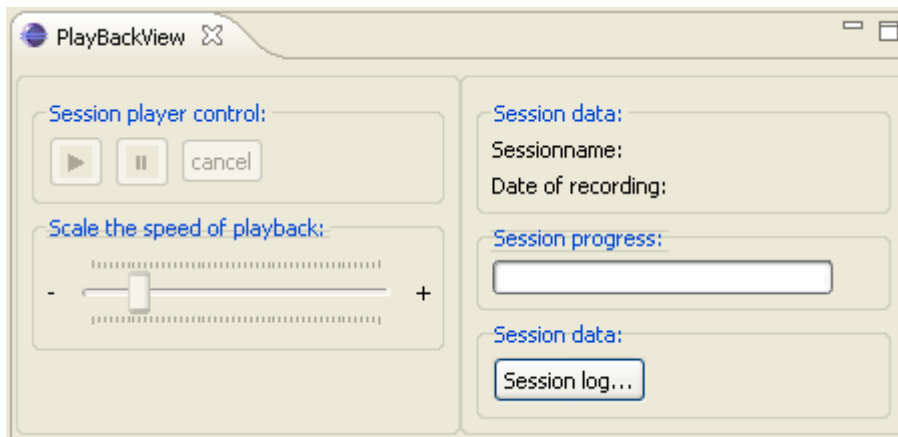
You can start the PlayBackView by using the menu **Window > ShowView > Other > XecliP > PlayBackView**. If you have chosen the XecliP perspective, the view can be found on the bottom group of the window.

The PlayBackView can be used to start a search for recorded sessions and to playback a recorded session. ([SessionDefinitionDialog](#)). To use the PlayBackView it is necessary to connect to a server. Because recorded sessions are stored at the server.

PlayBackView (at start):

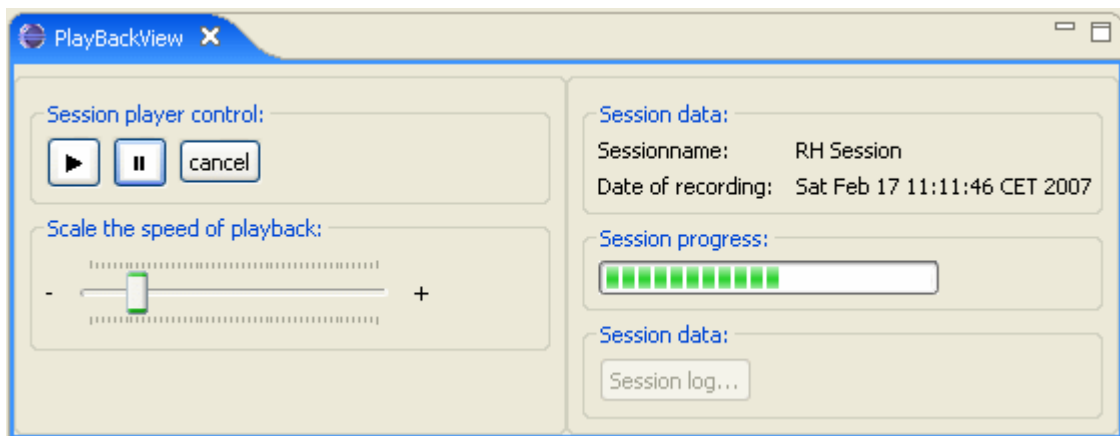
To search for recorded session, which are stored at the server, you should push the "Session log..." button first.

A new dialog will open. Here you can search for recorded sessions. ([SessionlogDialog](#)).




PlayBackView (playback is running):


After you have selected a session for playback at the SessionlogDialog, you will come back to the PlayBackView, where now all controls are enabled for playback.



At the PlayBackView you will see at the "Session data" group the name and the date of the recorded session.

By pushing the "Play"  button the session playback will start.

The speed of the playback can be determined by the scaler below. Move it to the right to speed up the playback. Move it to the left to slow down the playback speed.

To stop the playback for a while you can push the "Stop"  button on the player control.

At the "Session progress:" group you will see the progress of the session playback.

While the session playback is running, you will see the following events which took place at the original session:

- editor open
- editor text changes and text selections
- editor save
- editor close
- chat events (at chat views)
- switch role (at session view)
- joining or leaving visitors (at session view)

After you have started the session playback, the session is visible at the session view ([SessionView](#)). The name of the session is extended by the text "(PlayBack)". So you can identify the playback session easy.

Keep in mind:

While a playback of a session is running, you can not open another session, accept an invitation or join another session. Therefore the most menus on UserView and SessionView are disabled.

By pushing the "**Cancel**" button, you can leave the session playback. The temporary project folders will be deleted. You are now free to create or participate on other sessions.

2.8 Sessionlog Dialog

At Sessionlog Dialog you can search for recorded sessions on the server you are connected to and select one session for playback.

The screenshot shows a dialog box titled "Sessionlog ...". Inside, there's a subtitle "Sessionlog." and a message: "You can enter some critirias to search a session.Select a session from combo and start session.". The dialog is divided into three main sections. The first section is "Search by name / user:" with two text input fields: "Sessionname:" containing "session RH" and "Username:" containing "angi". The second section is "Search by date:" with two rows of date and time pickers. The first row is for "Date from:" with year "2006", month "1", day "1", and time "0300". The second row is for "Date to :". The third section is "Result:" with a single dropdown menu showing "Fri Feb 02 21:18:50 CET 2007 - session RH". At the bottom are three buttons: "Search", "Start Session", and "Cancel".

To search for all available sessions on the server you can just push the "**Search**" button. In order to limit the number of results and not to wait to long for an answer from the server, it is recommended to enter some search criteria.

At the fist upper group you can enter a session name and a user name. The session name must not be complete. The text you enter can be a part or can be the whole session name you know. The user name is used to identify all session where the user has participated as driver or navigator. Here you can enter the whole name or as far as you know only a part of the name.

At the second upper group you can enter a date from and a date to. All sessions which have a recording date between these two dates are included in the result. If you enter only a date from, all session form that date on and up today are searched. If you enter only a date to, all available sessions in the past which are older than the date to are included in the result.

Your can enter the search criteria in any combination you like. If you enter more than on criteria all the criteria must apply to the session.

To start the search you can push the "**Search**" button on the bottom of the dialog. While the searching is in progress and the data are transferred to you, you will see a progress monitor in the middle of the dialog. When all data have arrived, the progress monitor will disappear and the result will be shown in the combo box at the bottom of the dialog. If no session could be found, which matches you search criteria, the combo will only contain the text "no result".

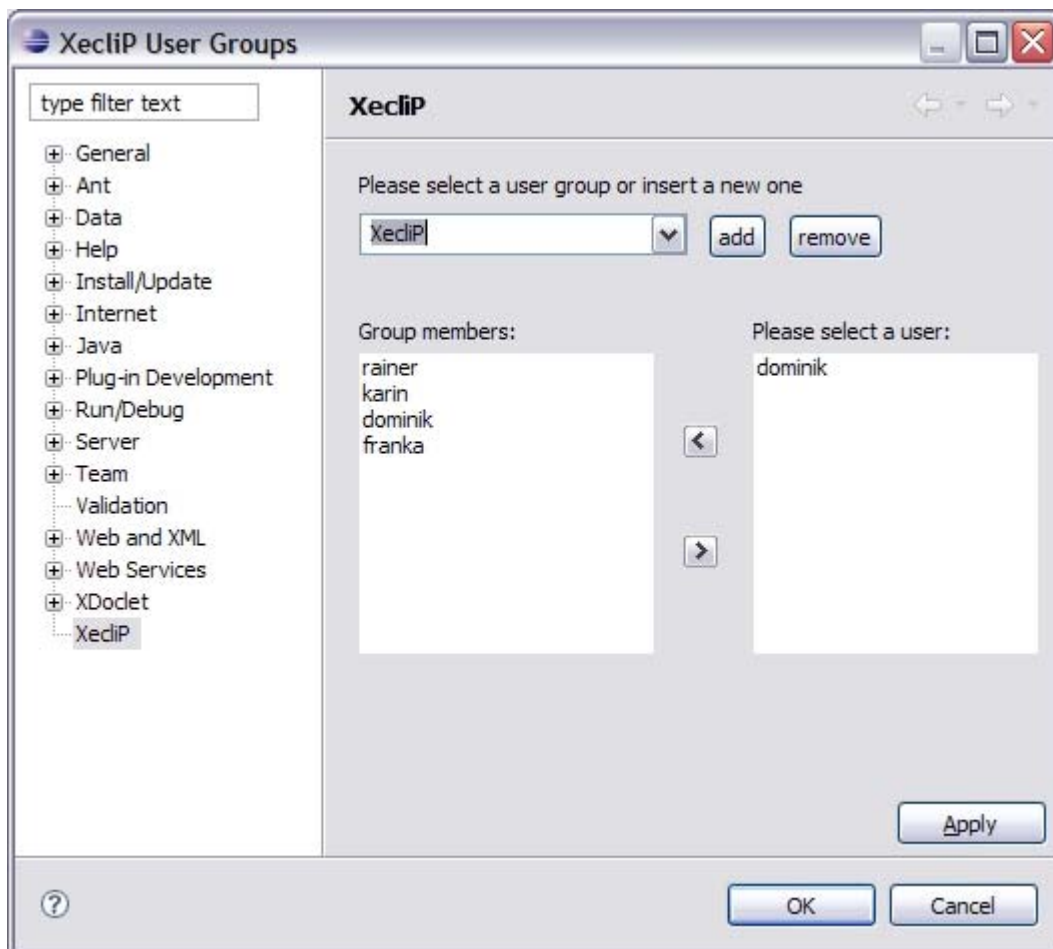
From the combo box you can choose on of the session for playback. If you want to start the session playback, you should push the button "**Start Session**". In order to start the session, the session log data are requested from the server. While the session log data are transfered to you, you will see a progress monitor. After you workspace have been initialized for playback, you will come back to the PalyBackView ([PlayBackView](#)).

If the session you want to see, is not in the result combo box, you can alter the search criteria to perform an other search.

To leave the dialog and not to playback any session, press the "**Cancel**" button.

2.9 XecliP Preferences (Editing Groups)

By a right click on the server or a group in the [User View](#) (“Organize Groups“) or by **Window > Preferences > XecliP** you enter the XecliP Preference Page. Here you can create and edit groups to organize your XP-partners shown in the User View.




Add Groups


To add a new Group enter the name in the combo-box on the top of the dialog and press the “add”-Button.

Remove Groups

To remove a group select it in the combo-box on the top of the dialog and press the “remove” button.

Edit Groups

The list on the right side of the dialog shows you all online XP-partners who can be added to a group. If you want to **add** a user select the group in the groups-combo-box or add a new one, select the user in the right list (“Please select a user”) and press the upper arrow-button  . The user will be listed in the left Groups-member-list. Please note: Only users with status “online”, in “session” or “busy” are able to be added to a group.

To **remove** a user from a group select the group, then select the user in the left “Group members”-list and press the lower arrow-button  .

Tasks

3.1 Create a Session

3.2 Working in Pairprogrammingsession

3.2.1 Act as Driver

3.2.2 Act as Navigator

3.2.3 Act as Visitor

3.2.4 SwitchRole

3.3 Close a Session

3.4 Communicating with XP-Partners

3.5 Create a user profile

3.6 Organize XP-Partnerlist

3.7 Playback a Session

3.8 Running XecliP-Server

3.1 Create A Session

After you have connected to the server ([QuickConnect](#)) you can choose a user for the pairing session. There are three possibilities to open the SessionDefinition Dialog ([SessionDefinition Dialog](#)):

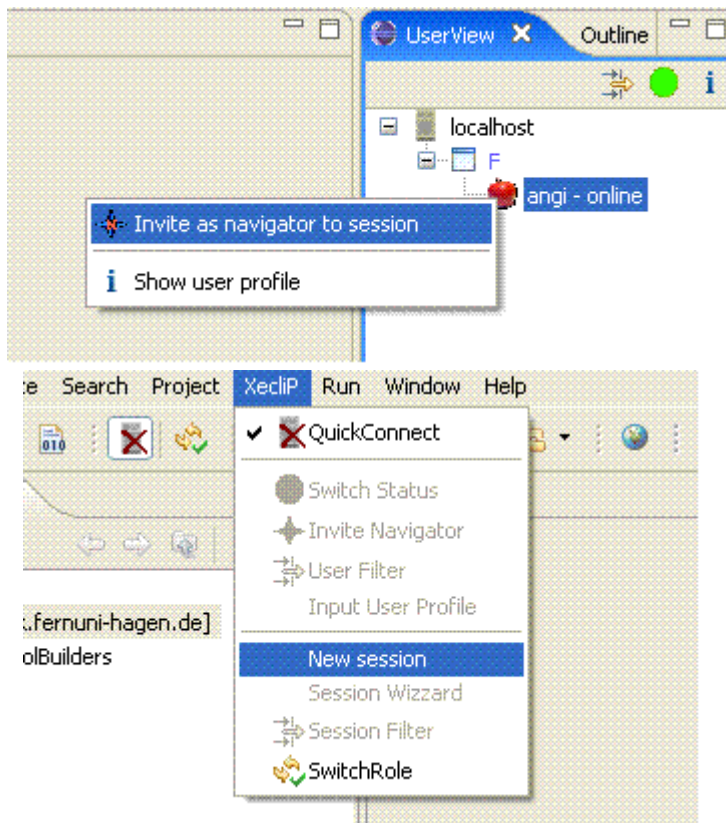
- Choose a user in the UserView ([UserView](#)) and right-click. Choose "Invite as navigator to session". The SessionDefinition Dialog will appear.
- Choose from the menu: **Xeclip > New session**. The SessionDefinition dialog will appear.
- Choose a user at the Session Wizard Result Dialog ([SessionWizard](#)). After the dialog gets open you can choose a xp-partner from the combo box. After pressing the OK button the SessionDefinition Dialog will appear.

3.2 Working in Pairprogrammingsession

3.2.1 Act as Driver

Before the session

To become the driver in a session, you must first initiate a session. The person who initiates a session is always the driver in the beginning. To start a session, you invite another user, either by selecting "Invite as navigator to session" from the context menu in the user view, or by selecting "New Session" from the XecliP main menu.



After filling out the session definition dialog, the user you invited as navigator will be informed about your invitation, and if she accepts, the session will be initiated. Due to workspace synchronization, this may take a while.

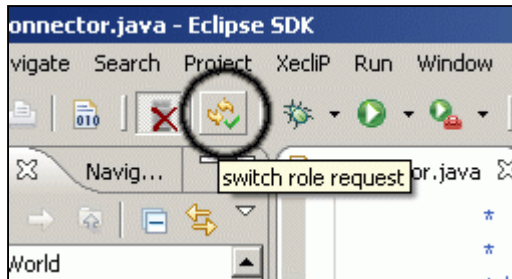
Within the session

Once the session is ready, you are the driver for this session. You can now do any of the following:

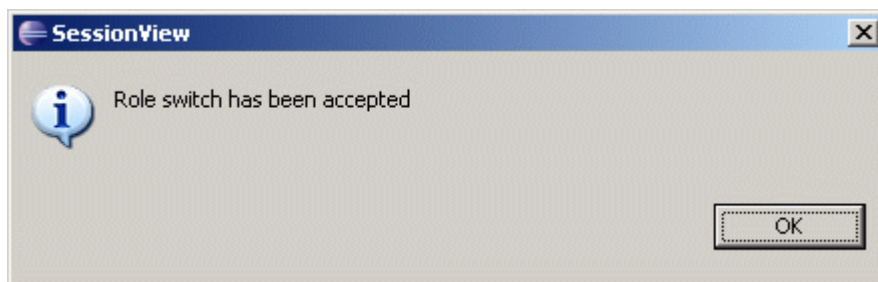
- Open files for editing, just as if working alone on a project
- Edit file, also just as usual
- Write to the driver/navigator chat
- Write to the visitor chat
- Request a role switch (see below)
- Grant speech right to a visitor (see below)
- Close the session

Among the actions you can only do in a pair programming session, one is to request a role

switch. A role switch must be accepted by your partner. You may request to **switch roles** in the current session by clicking the switch role button in the top left corner of your Eclipse

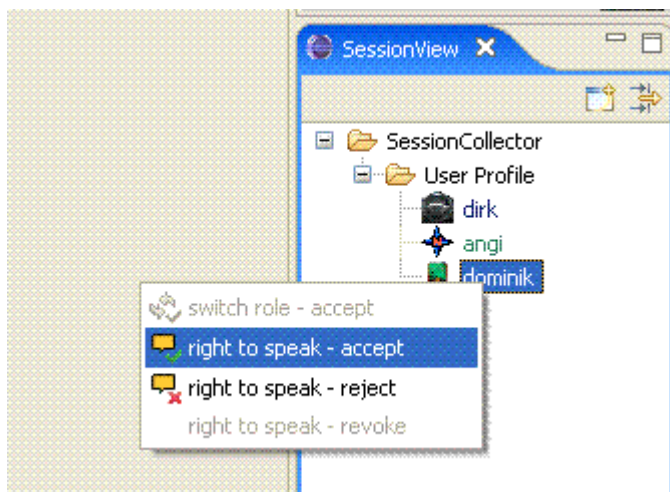


If the navigator accepts the role switch, a message is displayed and you are now navigator.



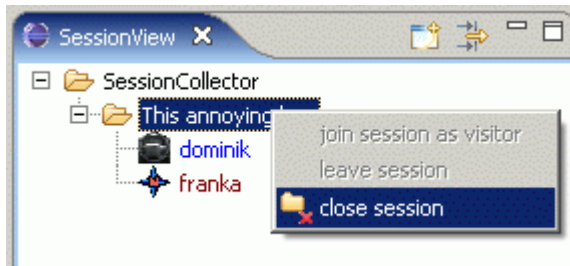
Another action which can **only** be performed by the driver is to grant speech right to a visitor who has requested it. A visitor who has requested speech right is marked in the session view with a blinking black background.

You can accept or reject the visitors request for speech right by selecting the corresponding entry from the context menu you get by right-clicking on the visitors name in the session view. This will allow the visitor to post into the driver/navigator chat.



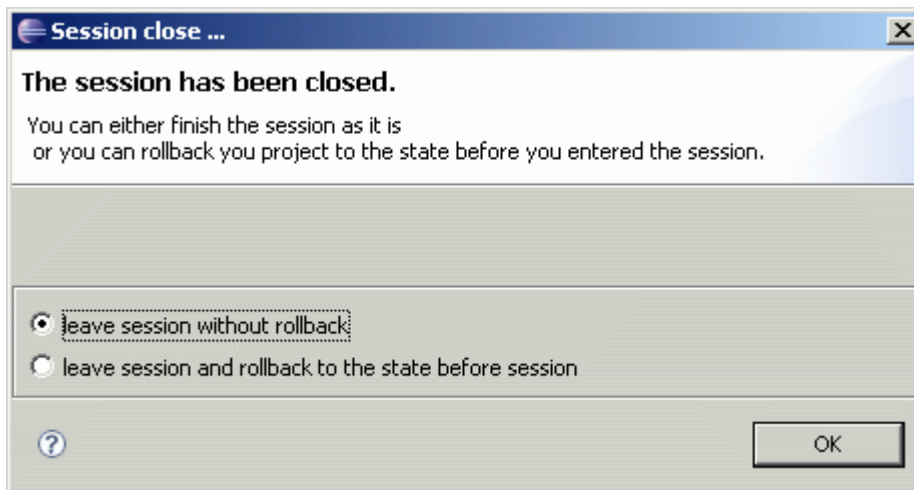
At any time after granting the speech right, you can also revoke it from the visitor by selecting the **revoke** entry from the same context menu.

When you are done you can **close the session** by right-clicking your session in the session view and selecting "close session".



After the session

After the session is closed you will be prompted two options, to either to leave the session without rollback all changed content to the previous state or to leave everything as it is. You should only use rollback if you don't need anything that was coded while you were in session with your XP partner. Remember that the changes are not committed to your version control system automatically after the session ends. It is a wise idea to coordinate who should commit the changes before ending the session.



3.2.2 Act as Navigator

Before the session

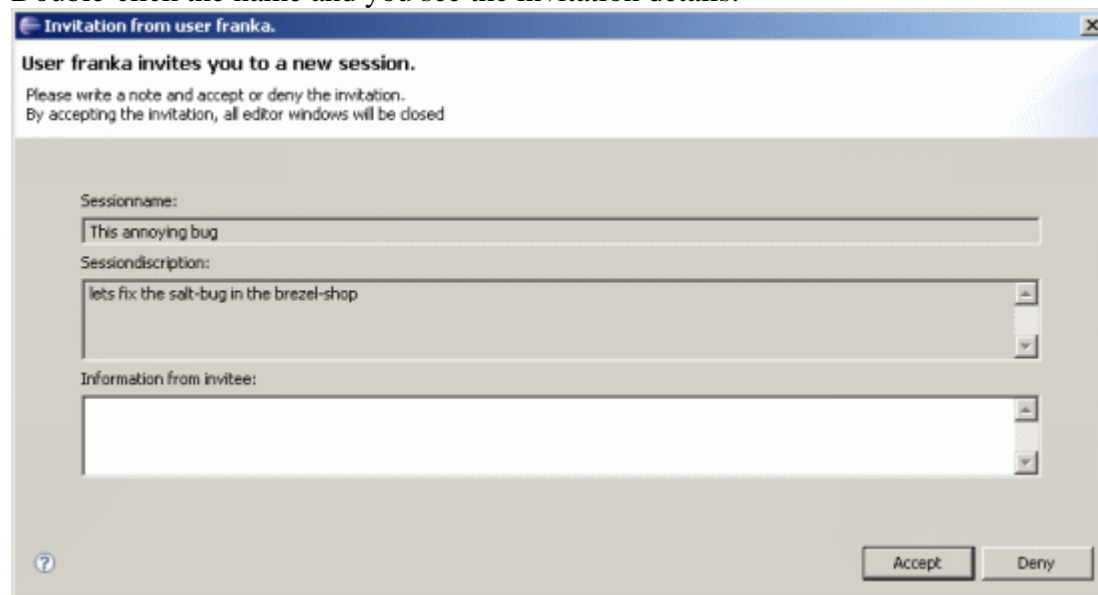
To join a session as navigator you must have two things:

1. an invitation from someone else
2. a checked-out CVS-project matching the project in the invitation

If you get an invitation you will notice the yellow background color in the user view, in the picture Franka invites us to a session.

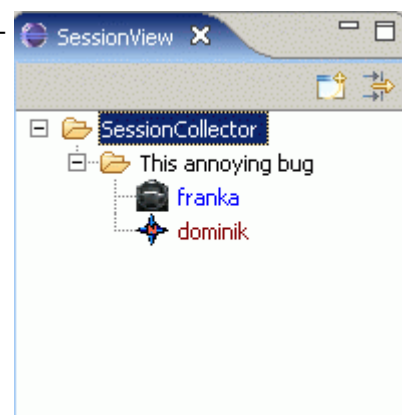


Double-click the name and you see the invitation details:



You may accept or deny the invitation. If you deny it, you can enter some additional information why you don't want to start a session. Your answer is then displayed on the driver's side.

If you accept, the session will be created within some seconds - depending on how far your project-versions are divided. After that the session-view will be updated with your session. The small icon in front of your name tells you about your role in the session. Currently franka is Driver (indicated by the steering wheel) and dominik Navigator (indicated by the compass rose).



Within the session

The driver opens a .java-Document from the current project. This is opened on the participant's side. While the driver is by design the only one who can change something within the document the XecliP-plugin helps the Navigator to do his guiding job in multiple ways:

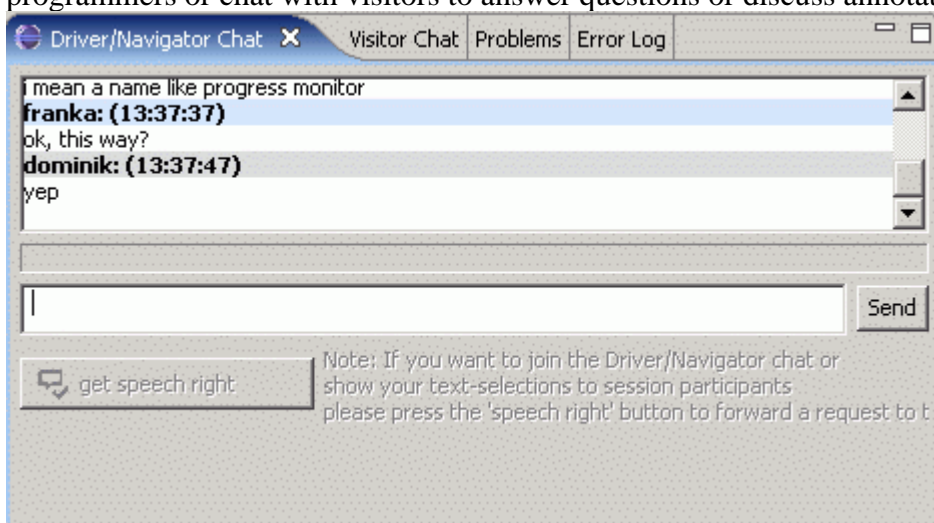
- you can **see the text changes**, cursor and scroll-movements the driver currently makes in the editor window (note that only documents which are part of the current project will be transferred)
- you can **select text** with your mouse-cursor at any time, the selection will be displayed on every corresponding editor from other session participants in the same color you use

```

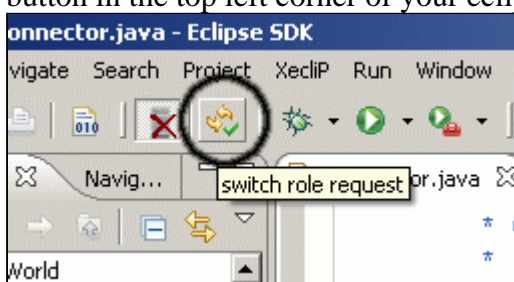
*           the message to be send
* @param monitor
*           progress monitor
* @throws IOException
*           if an error occurs during communication
*/
public void sendMessage(IMessage message, IProgressMonitor monit

```

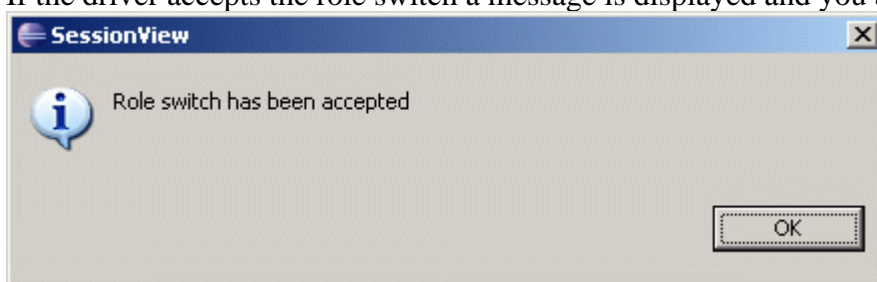
- you can **chat** in the driver/navigator chat – this chat is reserved for the two pair programmers or chat with visitors to answer questions or discuss annotations



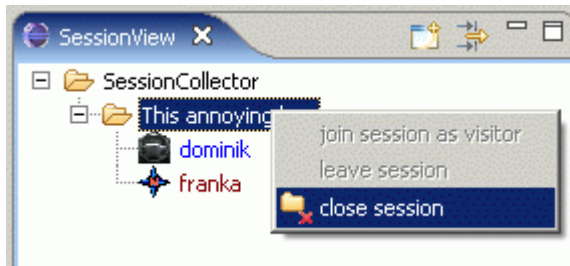
- you may request to **become the driver** in the current session by clicking the switch role button in the top left corner of your eclipse



If the driver accepts the role switch a message is displayed and you are now driver.

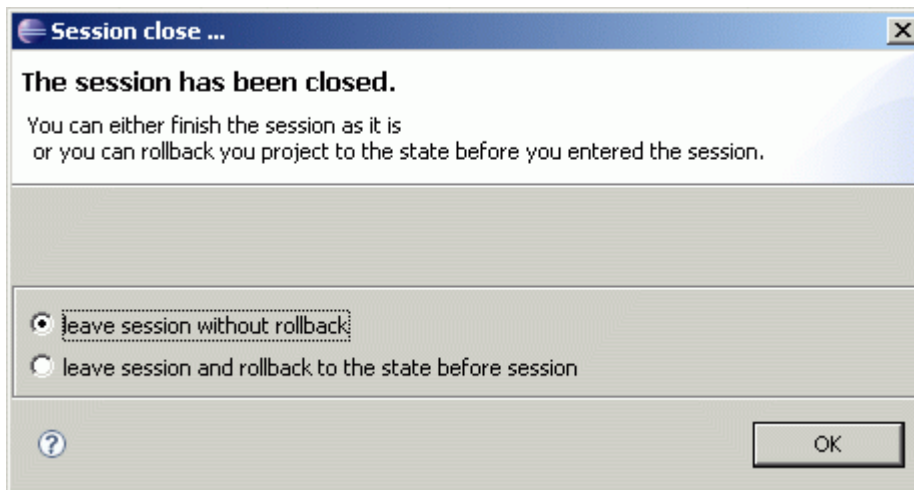


When you are done you can **close the session** by right-clicking your session in the session view and selecting "close session".



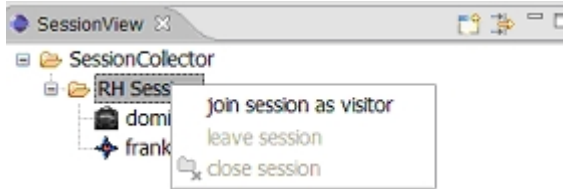
After the session

After the session is closed you will be prompted two options, to either to leave the session without rollback all changed content to the previous state or to leave everything as it is. You should only use rollback if you don't need anything that was coded while you were in session with your XP-Partner. Remember that the changes are not committed to your version control system automatically after the session ends. It is a wise idea to coordinate who should commit the changes before ending the session.

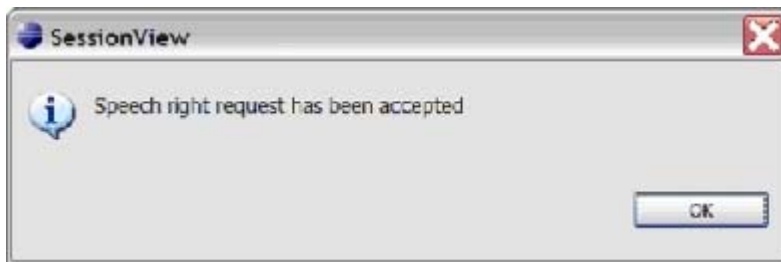


3.2.3 Act as visitor

XecliP provides the option to act as a visitor in an actual existing session of two XP-partners to another users. Therefore in the [SessionView](#) the user can join in the session. With a right-click on the session name in the session view a context menu opens and the user can place the request.



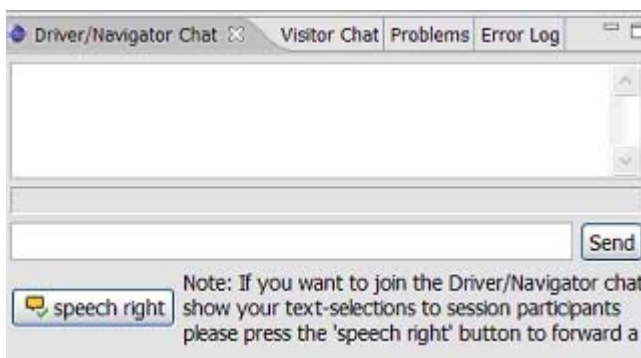
Then the visitor has to wait until the driver has accept his request to join session as a visitor.



As soon as the driver has accepted, the data transfer and the update of the visitors workspace starts. The visitor receives the data from the actual project like the driver and navigator.

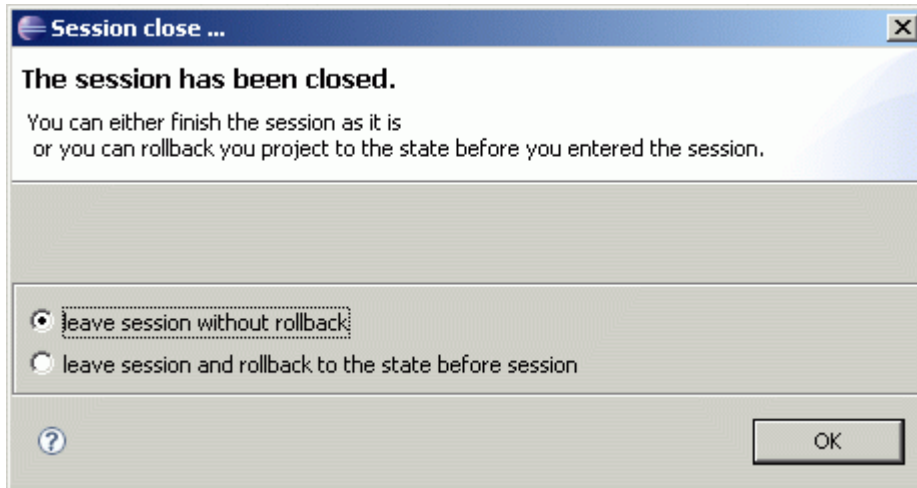
It is possible, that several visitors join a session. The visitors are able to communicate to each other within the visitor chat.

By the option get "speech right" in the driver/navigator chat and the confirmation by the driver, the visitor gets some more rights.



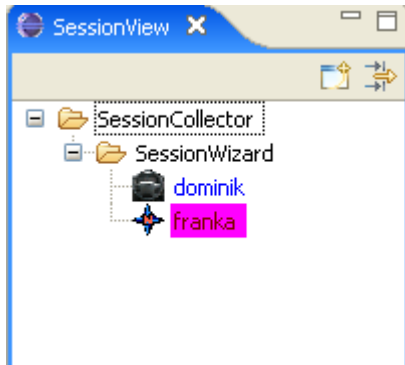
Now the visitor is allowed to mark text in the driver/navigator editor and to write in the driver/navigator chat.

After the session is closed there will be shown two options to you, either to leave the session without rollback of all changed contents to the previous state of the workspace or to hold onto the workspace as it is. You should only use rollback if you don't need anything coded while you were in session with your XP-Partners. Remember that the changes are not committed to your version control system automatically after the session ends. It is a wise idea to make an arrangement about who should commit the changes before terminate the session.



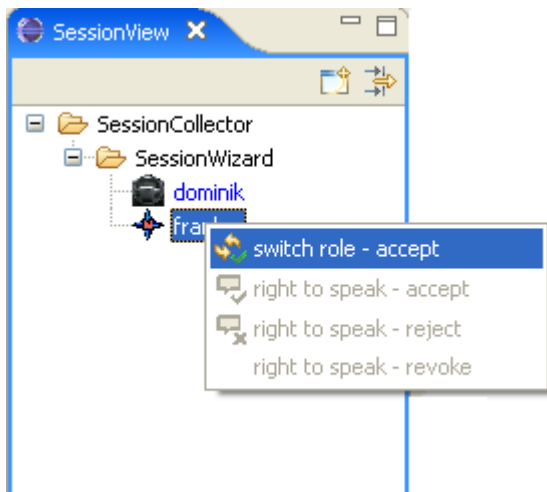
3.2.4 SwitchRole

At the main toolbar and the XecliP menu you can find a toggle button, to initiate a switch role request (🔄) and to cancel a switch role request (🔄✖). When you are in a pairing session you can switch the role from driver to navigator or vice versa. The other user will see the request at the SessionView which will get the focus:



This example shows a request from the navigator franka.

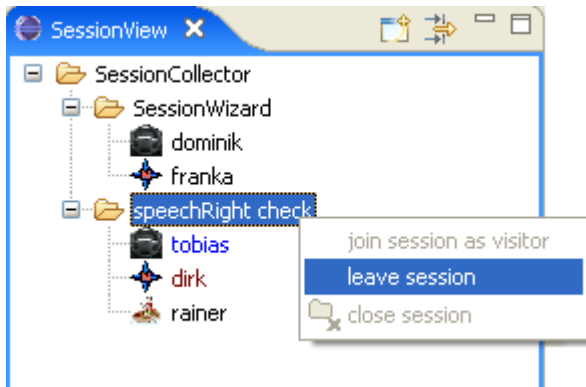
To accept this request right-click the purple marked user and a popup menu will open. Here you can find the option to accept the switch role request



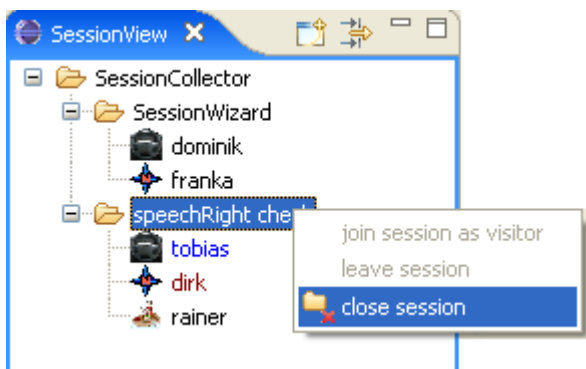
The switch role requester can take back the request by pressing the "switch role cancel" button (toggle button). The purple marked requester in the SessionView will vanish.

3.3 Close a session

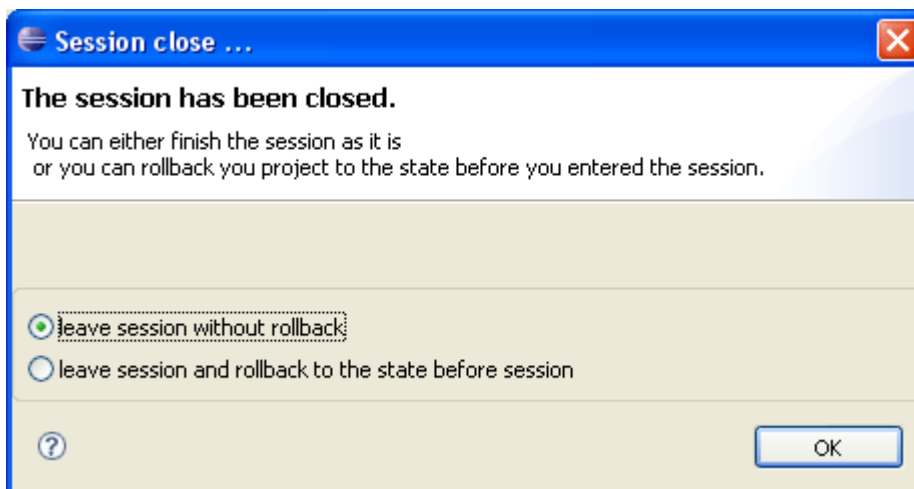
If you want to leave the session as a **visitor** simply select the entry “leave session” in the [session view’s](#) popup-menu by right clicking the session’s label.



Leaving a session as a **driver** or **navigator** also means to close the session. This will cause all other participants to leave the session too. They will be informed by an accordant message. To close the session choose the entry “close session” in the [session view’s](#) popup-menu by right clicking the session’s label.



Your workspace has been changed by means of the session. After you have left, you want to decide whether to keep the changes or rollback. You choose the corresponding setting from the upcoming dialog and press ok.



3.4 Communicating with XP-Partners

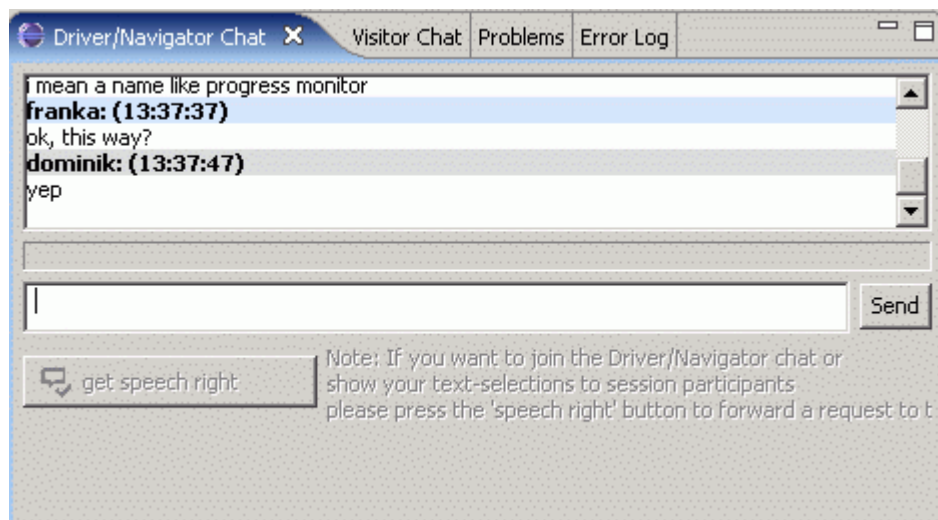
Before the session

You have to enter a session before you can use the chat.

Within the session

While in session you can use the XecliP chat views to chat with the session participants. There are two types of chat views:

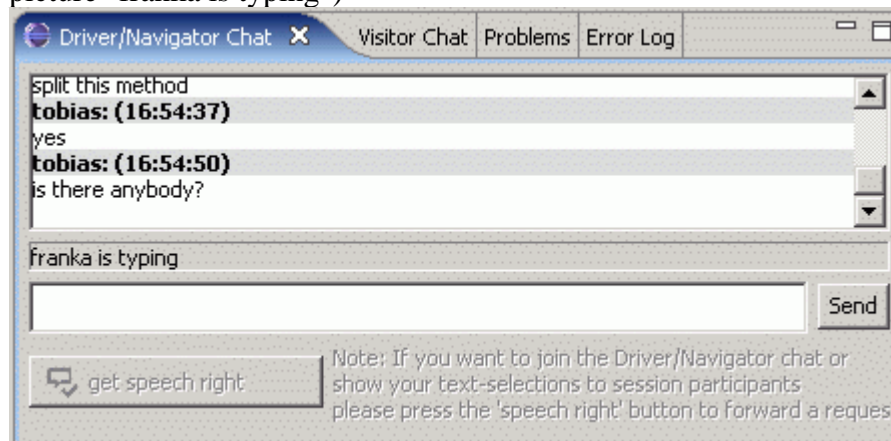
Driver/Navigator Chat and Visitor Chat




While the Visitor Chat can be used by every session participant the Driver/Navigator Chat may only be used by Driver or Navigator. However it is possible for a visitor to use the Driver/Navigator Chat too, if he was granted speech right. See [Act As Visitor](#) for details about speech right.

If you have used a chat before you don't have to learn anything new. Just type in your message in the input line and press Enter or click on the button "Send". Your message will be send to all participants and displayed in the output window above.

If you start typing a notice is displayed on the participants side (e.g. in this picture "franka is typing")



3.5 Create a user profile

By using the  button at the user view's menu (**UserView**) you can start the user profile input dialog. Within this dialog each user can give some details about his person (name, address etc.), personal skills and projects, he has participated. The user can also load a picture.

The skills are necessary and helpful to get some more informations about yourself and later this statements help another user to find a partner for a common project. For example you can search with the session wizard for users with special skills.



User Profile Input Dialog

User details

username:

name:

first name:

city:

country:

instant messaging:

e-mail:



Please enter your abilities

GUI development: network programming:

Test / Debugging: Thread programming:

Please enter further informatons:

In which projects do your actually work or have worked?

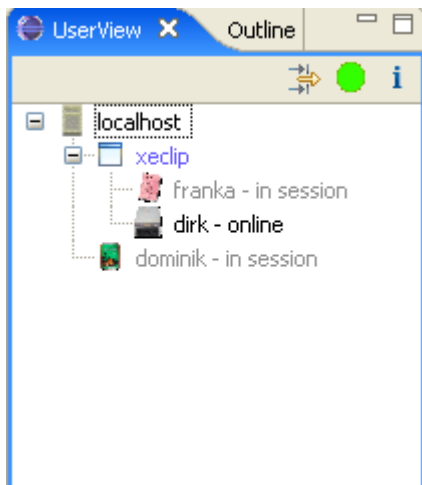
project 1:

project 2:

project 3:

3.6 Organize your XP-Partners.

As described in previous chapters, all users are shown in the [UserView](#). You may find it useful to organise them.



There are two ways to do this. First you can group users by topics you can set individually. Right click on the server or a group in the [User View](#) ("Organize Groups") or select **Window > Preferences > XecliP** and enter the [XecliP Preference Page](#).

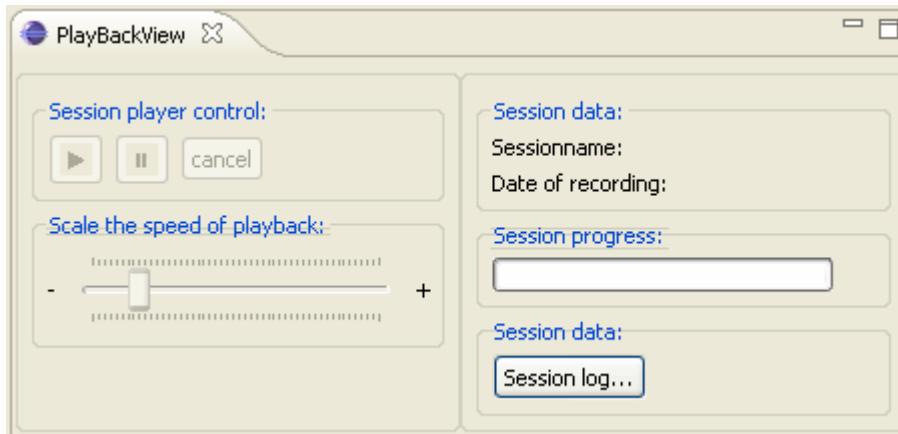
The other option is to filter users by attributes like name or online status. To do this utilize the filter function as described on the page about the [User View](#).

3.7 Playback a Session

For a session playback you need to open the PlayBackview. You can start the PlayBackView by using the menu **Window > ShowView > Other > XecliP > PlayBackView**. If you have chosen the XecliP perspective, the view can be found on the bottom group of the window.

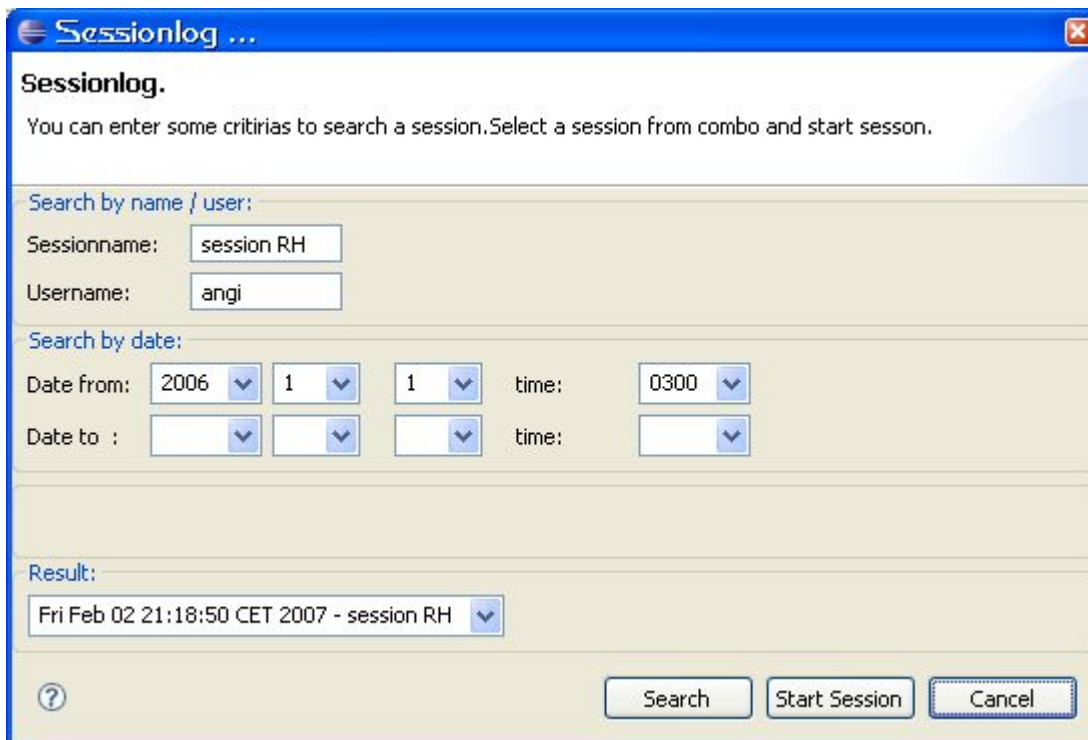
The PlayBackView can be used to start a search and to playback a recorded session. ([SessionDefinitionDialog](#)). To use the PlayBackView it is necessary to connect to a server. Because recorded sessions are stored at the server.

PlayBackView (at start):



To search for recorded session which are stored at the server, you should push the "Session log..." button first. A new dialog will open.

Sessionlog Dialog:



To search for all available sessions on the server you can just push the "Search" button. In order to limit the number of results and not to wait to long for an answer from the server, it is recommended to enter some search criteria.

At the fist upper group you can enter a session name and a user name. The session name must

not be complete. The text you enter can be a part or can be the whole session name you know. The user name is used to identify all session where the user has participated as driver or navigator. Here you can enter the whole name or as far as you know only a part of the name.

At the second upper group you can enter a date from and a date to. All sessions which have a recording date between these two dates are included in the result. If you enter only a date from, all session from that date on and up today are searched. If you enter only a date to, all available sessions in the past which are older than the date to are included in the result.

You can enter the search criteria in any combination you like. If you enter more than one criteria all the criteria must apply to the session.

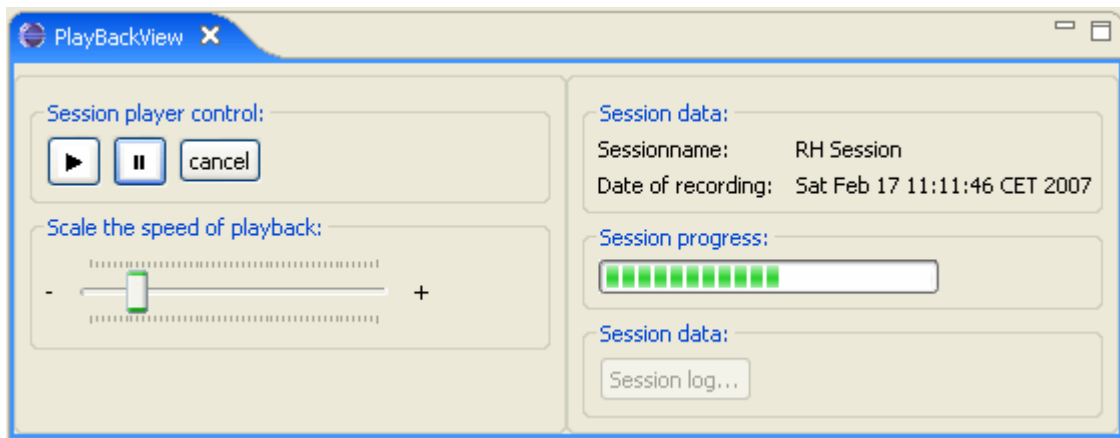
To start the search you can push the **"Search"** button on the bottom of the dialog. While the searching is in progress and the data are transferred to you, you will see a progress monitor in the middle of the dialog. When all data have arrived, the progress monitor will disappear and the result will be shown in the combo box at the bottom of the dialog. If no session could be found which matches your search criteria, the combo will only contain the text "no result".

From the combo box you can choose one of the sessions for playback. If you want to start the session playback, you should push the button **"Start Session"**. In order to start the session, the session log data are requested from the server. While the session log data are transferred, you will see a progress monitor.

If the session you want to see, is not in the result combo box, you can alter the search criteria to perform another search.

To leave the dialog and not to playback any session, press the button **"Cancel"**.



PlayBackView (playback is running):



After the session log data have arrived, your workspace will be set up with the session data and you will see one or more temporary projects in your workspace. The name of the project folders begins with "PlayBackProject".

For playback all controls are now enabled at PlayBackView.

At the PlayBackView you will see at the "Session Data" group the name and the date of the recorded session.

By pushing the **"Play"**  button the session playback will start. The speed of the playback can be determined by the scaler below. Move it to the right to slow down the playback speed. Move it to the left to speed up the playback. To stop the playback for a while you can push the **"Stop"**  button on the player control. At the "Session progress:" group you will see the progress of the session.

While the session playback is running, you will see the following events which took place at

the original session:

- editor open
- editor text changes and text selections
- editor save
- editor close
- chat events (at chat views)
- switch role (at session view)
- joining or leaving visitors (at session view)

After you have started the session playback, the session is visible at the session view. The name of the session is extended by the text "(PlayBack)". So you can identify the playback session easy.

Keep in mind:

While a playback of a session is running, you can not open another session, accept an invitation or join another session. Therefore the most menus on UserView and SessionView are disabled.

By pushing the "**Cancel**" button, you can leave the session playback. The temporary project folders will be deleted. You are now free to create or participate on other session.

3.8 Running XecliP-Server

There are two ways to start the xeclip-Server-Component. After the server is started it will listen on the default port 2631 for incoming XecliP-Client-Connections.

- The easiest way to run the XecliP-Server is to use the .jar-Distribution.: Download XecliPServer.jar and put it in an dedicated folder. Change to that directory and run

```
java -Xmx500m -jar XecliPServer.jar
```

On first start multiple files and folders will be created.

A note to Windows Users: It's a good idea to create a shortcut for that.

```
<your-jre-bin>\java.exe -jar "<your-path-to-xeclipServerJar>\XecliPServer.jar"
```

- If you have loaded the project into you eclipse workspace and you want to start it within your eclipse environment, you have to select the class de.feu.xeclip.server.StartServer and then select "Run as" > "Java Application"